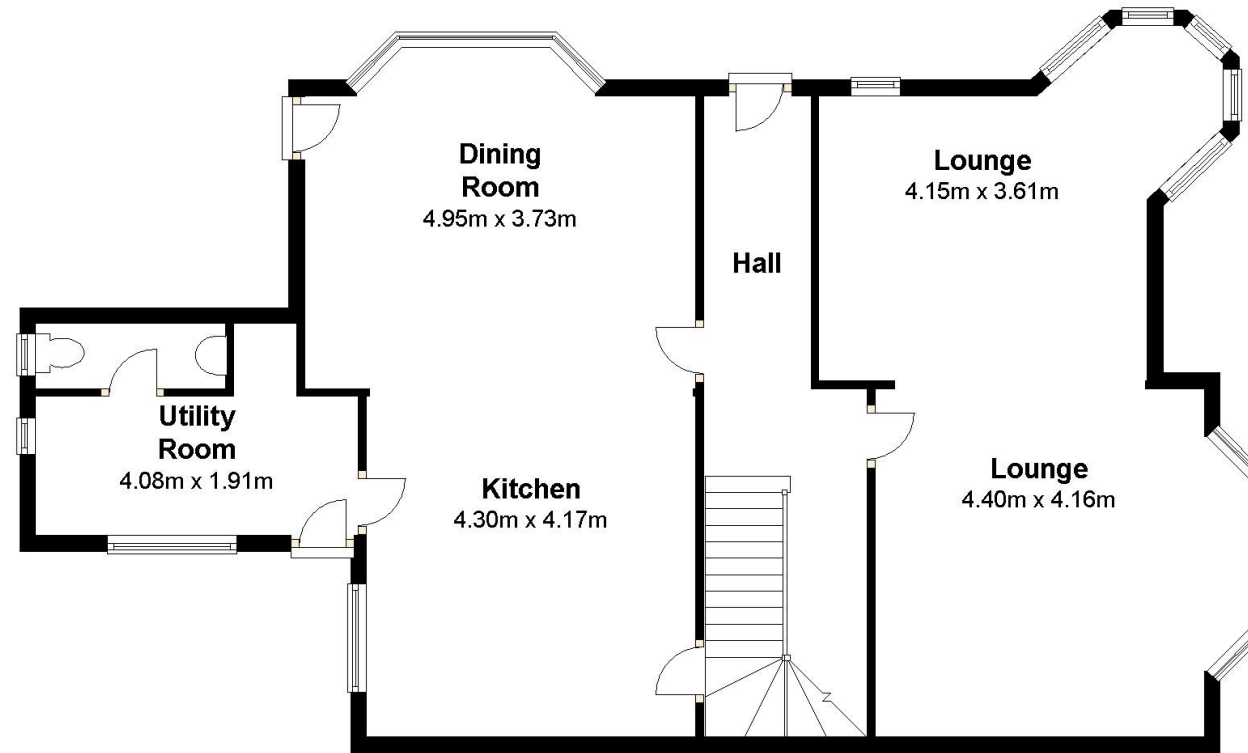


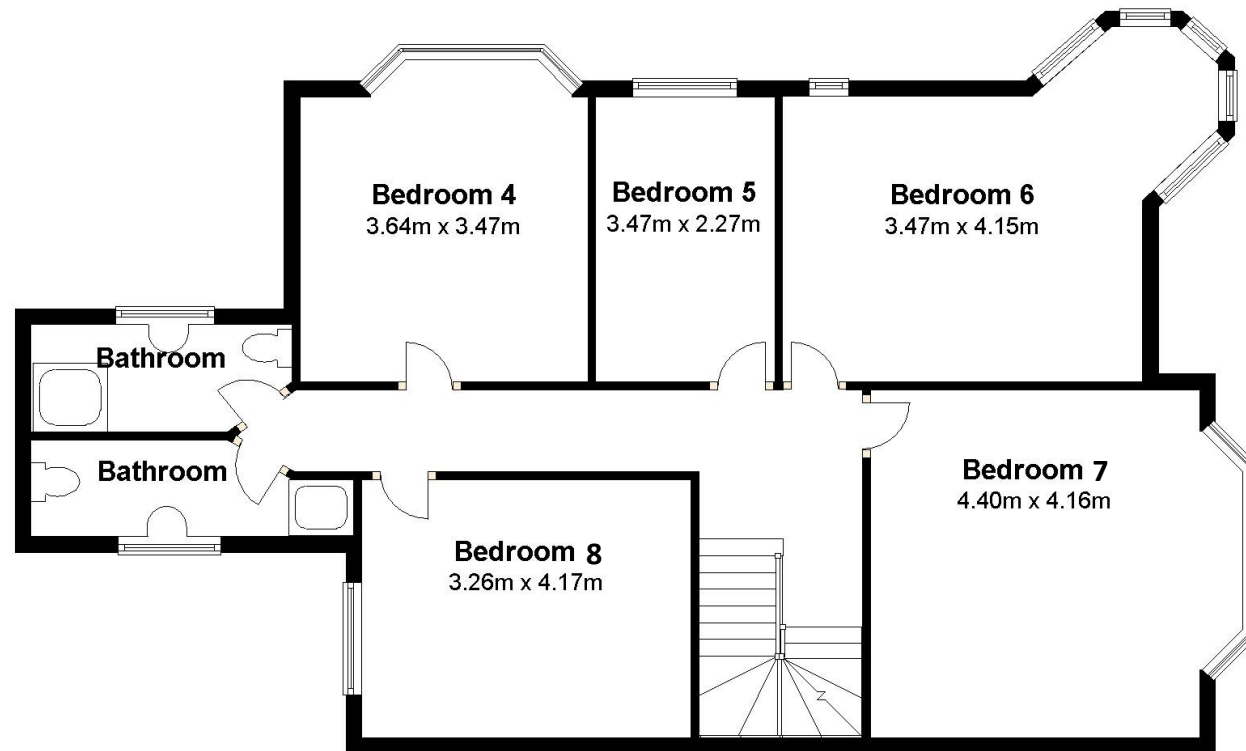
### Ground Floor

Approx. 114.4 sq. metres (1231.0 sq. feet)



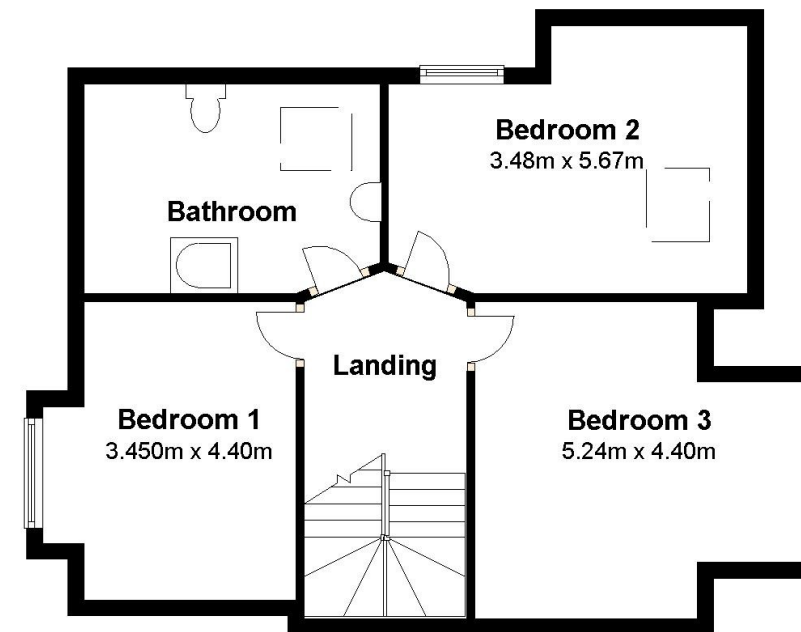
### First Floor

Approx. 96.9 sq. metres (1042.9 sq. feet)



### Second Floor

Approx. 58.0 sq. metres (624.6 sq. feet)



Total area: approx. 269.3 sq. metres (2898.5 sq. feet)