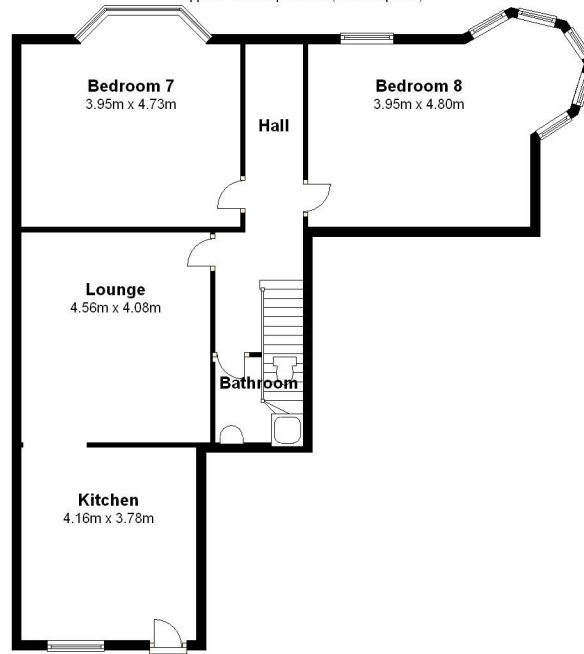


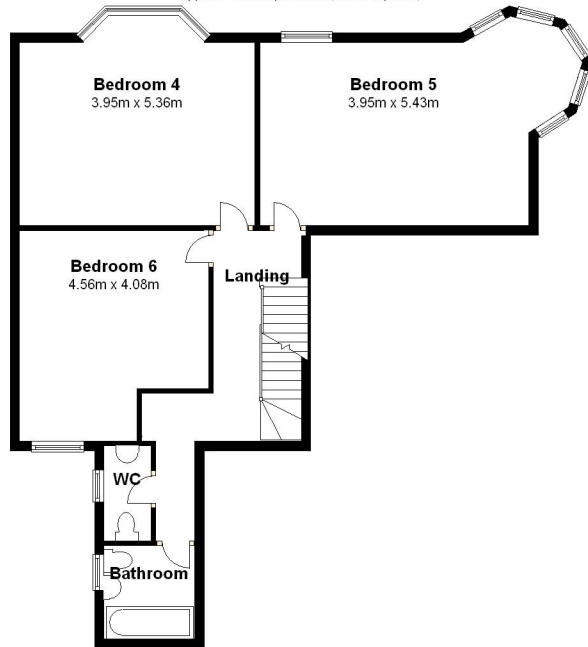
### Ground Floor

Approx. 89.4 sq. metres (961.8 sq. feet)



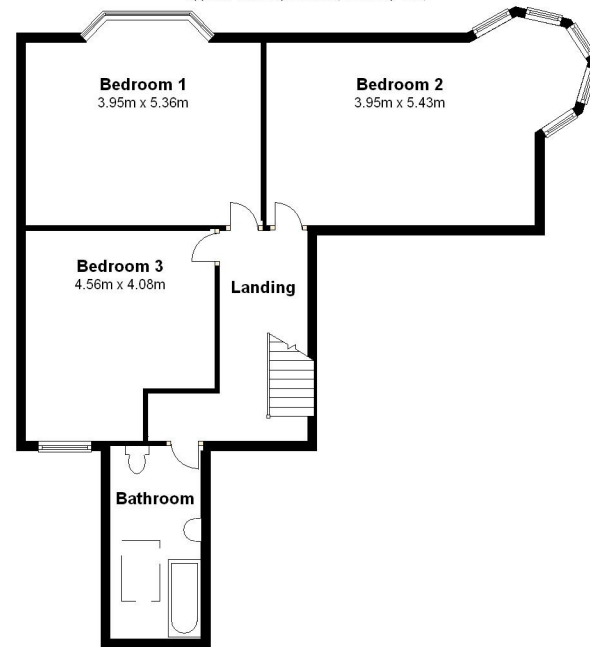
### First Floor

Approx. 81.6 sq. metres (878.5 sq. feet)



### Second Floor

Approx. 81.8 sq. metres (880.3 sq. feet)



Total area: approx. 252.8 sq. metres (2720.6 sq. feet)